

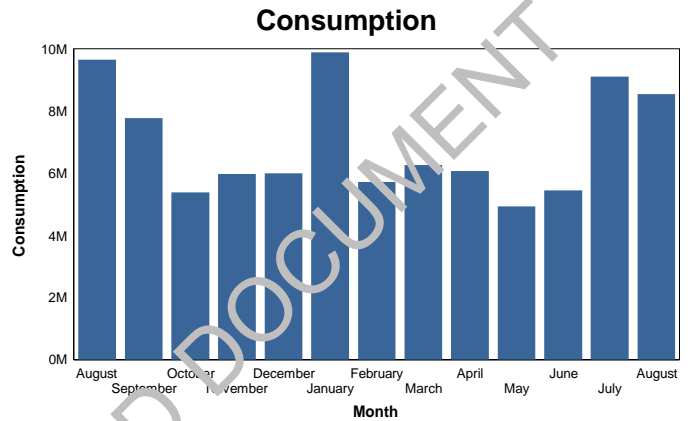
**Lewes Board of Public Works
Billing Revenues and Quantities**

August (2017 - 2018)

Electric

	No. of Meters	Same Month Last Year	Revenue	Same Month Last Year	KWH Consumed	Same Month Last Year
Residential	3,264	3,249	\$ 510,234	\$ 573,046	4,021,114	4,679,909
Commercial	395	398	\$ 141,550	\$ 139,732	1,013,710	1,069,558
Industrial	33	33	\$ 337,024	\$ 386,369	3,149,786	3,576,373
City	21	21	\$ 12,956	\$ 14,919	95,513	110,927
BPW	40	41	\$ 30,206	\$ 26,674	269,559	218,311
Total	3,753	3,742	\$ 1,031,970	\$ 1,140,740	8,549,682	9,655,078

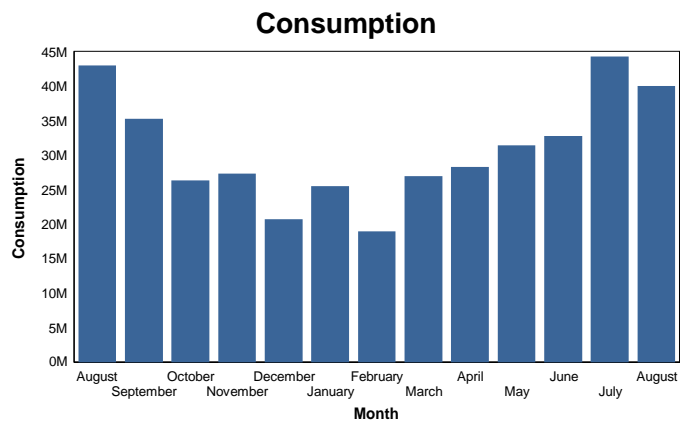
Financial Year	Month	KWH Consumed	
2016 - 2017	August	9,655,078	
	September	7,774,055	
	October	5,379,368	
	November	5,976,305	
	December	5,994,101	
	January	9,890,263	
	February	5,726,675	
	March	6,264,274	
	2017 - 2018	April	6,069,281
		May	4,932,724
		June	5,447,648
		July	9,107,925
August		8,549,682	



Water

	No. of Meters	Same Month Last Year	Revenue	Same Month Last Year	GAL Consumed	Same Month Last Year
Residential	2,952	2,922	\$ 115,815	\$ 77,360	16,903,498	19,717,405
Commercial	142	141	\$ 21,480	\$ 13,963	8,449,000	5,302,200
Industrial	32	30	\$ 32,657	\$ 37,705	14,201,700	17,542,600
City	13	14	\$ 1,028	\$ 943	379,300	364,200
BPW	4	3	\$ 193	\$ 128	36,900	18,800
Total	3,143	3,110	\$ 171,173	\$ 130,100	39,970,398	42,945,205

Financial Year	Month	GAL Consumed	
2016 - 2017	August	42,945,205	
	September	35,210,203	
	October	26,337,104	
	November	27,296,102	
	December	20,673,036	
	January	25,462,871	
	February	18,935,904	
	March	26,921,642	
	2017 - 2018	April	28,239,244
		May	31,374,448
		June	32,716,533
		July	44,247,097
August		39,970,398	



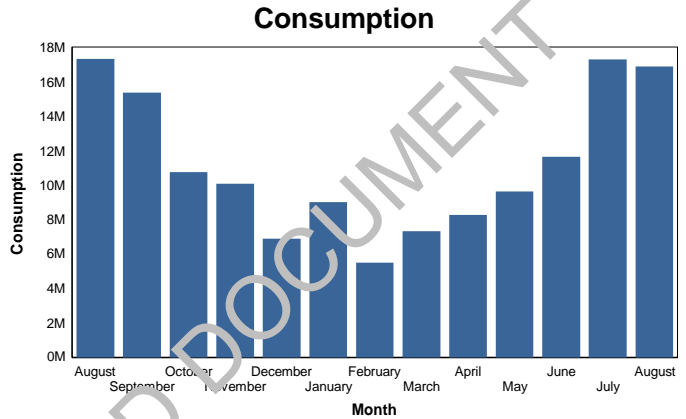
**Lewes Board of Public Works
Billing Revenues and Quantities**

August (2017 - 2018)

Sewage

	No. of Meters	Same Month Last Year	Revenue	Same Month Last Year	GAL Consumed	Same Month Last Year
Residential	2,668	2,646	\$ 201,639	\$ 205,792	11,301,880	12,313,325
Commercial	131	130	\$ 23,825	\$ 21,393	2,107,520	1,730,320
Industrial	27	27	\$ 29,324	\$ 28,542	3,146,080	2,997,600
City	13	13	\$ 2,699	\$ 2,396	304,080	254,400
BPW	3	2	\$ 337	\$ 290	9,920	10,640
Total	2,842	2,818	\$ 257,824	\$ 258,413	16,869,480	17,306,285

Financial Year	Month	GAL Consumed
2016 - 2017	August	17,306,285
	September	15,351,466
	October	10,752,146
	November	10,073,408
	December	6,890,173
	January	8,998,779
	February	5,491,486
	March	7,320,048
	2017 - 2018	April
	May	9,609,301
	June	11,628,427
	July	17,275,258
	August	16,869,480



Storm Water

	No. of Meters	Same Month Last Year	Revenue	Same Month Last Year	GAL Consumed	Same Month Last Year
Residential	2,734	2,723	\$ 13,690	\$ 13,605	0	0
Commercial	141	140	\$ 1,410	\$ 1,400	0	0
Industrial	28	26	\$ 580	\$ 540	0	0
City	13	14	\$ 130	\$ 140	0	0
BPW	6	5	\$ 70	\$ 60	0	0
Total	2,922	2,908	\$ 15,880	\$ 15,745	0	0

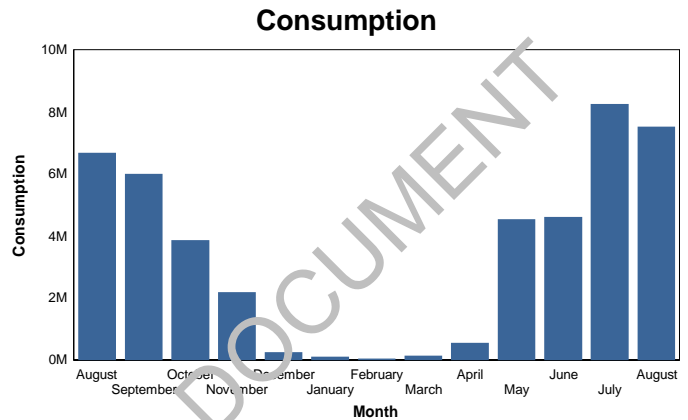
**Lewes Board of Public Works
Billing Revenues and Quantities**

August (2017 - 2018)

Irrigation

	No. of Meters	Same Month Last Year	Revenue	Same Month Last Year	GAL Consumed	Same Month Last Year
Residential	448	435	\$ 17,404	\$ 13,589	6,619,300	5,898,800
Commercial	28	28	\$ 1,052	\$ 1,047	433,100	445,900
Industrial	4	4	\$ 487	\$ 380	220,200	174,300
City	5	5	\$ 567	\$ 389	246,900	162,900
Total	485	472	\$ 19,510	\$ 15,405	7,519,500	6,681,900

Financial Year	Month	GAL Consumed	
2016 - 2017	August	6,681,900	
	September	5,998,200	
	October	3,858,100	
	November	2,186,300	
	December	253,500	
	January	106,300	
	February	48,200	
	March	141,100	
	2017 - 2018	April	549,800
		May	4,536,100
		June	4,611,500
		July	8,249,500
August		7,519,500	



PRELIMINARY BOARD DOCUMENT